

VERKADELING : Edmond Devloostraat - FASE 2

AFBAKENINGSPLAN : Gemeente VLETEREN

VLETEREN - 1ste Afdeling - OOSTVLETEREN - Sectie A

Openbaar domein OD - oppervlakte : 65Ca

Prceel 853M2 - oppervlakte 35A 14Ca

Perceel 853B - oppervlakte : 26A 44Ca

Perceel 840B - oppervlakte : 38A 56Ca

Perceel 838K - oppervlakte : 88A 57Ca

BUREAU VANDENDRIESSCHE BVBA
STUDIEBUREAU VOOR ONROERENDE GOEDEREN

Landmeetkunde - Topografie
Expertise - Schattingen - Consultancy
Veiligheidscoördinatie
EPB-verslaggeving / Energiedeskundige

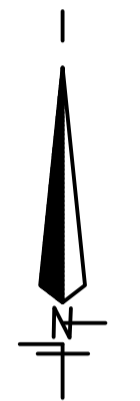
Begoniastraat 20 - 8850 Ardoie
Tel 057.469.439 Fax 057.36.43.84
Bureau.vandendriessche@telenet.be

Rijselstraat 16/3 - 8900 Ieper
GSM 0475.39.02.79
www.bureau-vandendriessche.be

Afdrukschaal 1/400 Datum 13/02/2019

Landmeter-expert ing Olivier Vandendriessche, beëdigd door de Rechtbank van eerste Aanleg te Brugge, ingeschreven op het Tableau van de Federale Raden van Landmeters-Experten. LAN 040543

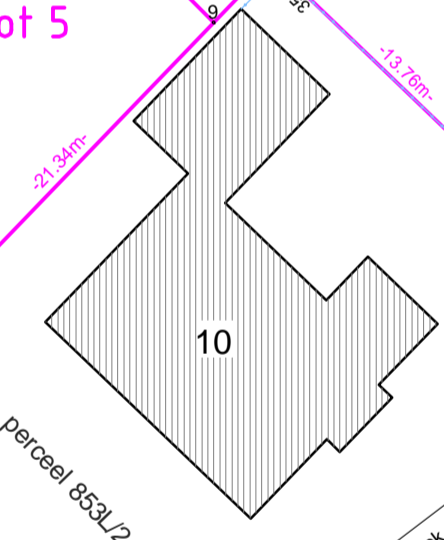
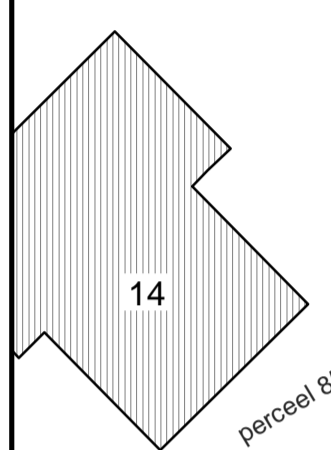
Legende	
○ fwa	huisaansluiting RWA
○ dwa	huisaansluiting DWA
	bouwzone woning
	bouwzone carport
	bouwzone garage
	zone belast met erfdienstbaarheid
	perceelsgrenzen



Overzicht Loten

Lot 1	opp. 449m²	perceel 853B/Ex
Lot 2	opp. 406m²	perceel 853B/Ex
Lot 3	opp. 404m²	perceel 853B/Ex + 853M2/Ex
Lot 4	opp. 402m²	perceel 853M2/Ex
Lot 5	opp. 540m²	perceel 853M2/Ex
Lot 6	opp. 619m²	perceel 853B/Ex
Lot 7	opp. 372m²	perceel 853B/Ex + 853M2/Ex
Lot 8	opp. 372m²	perceel 853M2/Ex
Lot 9	opp. 485m²	perceel 853M2/Ex
Lot 10	Lot 10/1 + 10/2 + 10/3 + 10/4 + 10/5	
Lot 10/1	opp. 1.456m²	perceel 838K/Ex + 853M2/Ex + OD
Lot 10/2	opp. 362m²	perceel 853M2/Ex
Lot 10/3	opp. 277m²	perceel 853M2/Ex
Lot 10/4	opp. 275m²	perceel 853M2/Ex + 853M2/Ex + OD
Lot 10/5	opp. 275m²	perceel 838K/Ex
Lot 11	opp. 354m²	perceel 838K/Ex
Lot 12	opp. 374m²	perceel 838K/Ex
Lot 13A	opp. 726m²	perceel 838K/Ex
Lot 13B	opp. 726m²	perceel 838K/Ex
Lot 14	opp. 354m²	perceel 838K/Ex
Lot 15	opp. 354m²	perceel 838K/Ex
Lot 16	opp. 477m²	perceel 838K/Ex
Lot 17	opp. 477m²	perceel 838K/Ex
Lot 18	opp. 675m²	perceel 838K/Ex + 840B/Ex
Lot 19	opp. 416m²	perceel 838K/Ex + 840B/Ex
Lot 20	opp. 438m²	perceel 838K/Ex + 840B/Ex
Lot 21	Lot 21/1 + 21/2 + 21/3 + 21/4 + 21/5	
Lot 21/1	opp. 1.227m²	perceel 838K/Ex + 840B/Ex
Lot 21/2	opp. 302m²	perceel 838K/Ex + 840B/Ex
Lot 21/3	opp. 233m²	perceel 838K/Ex + 840B/Ex
Lot 21/4	opp. 233m²	perceel 838K/Ex + 840B/Ex
Lot 21/5	opp. 226m²	perceel 838K/Ex + 840B/Ex
Lot 22	opp. 619m²	perceel 838K/Ex + 840B/Ex
Lot 23	opp. 661m²	perceel 853M2/Ex + 840B/Ex
Lot 24	opp. 4.391m²	perceel 838K/Ex + 853M2/Ex + OD perceel 853B/Ex + 840B/Ex
Lot 25	opp. 569m²	perceel 853B/Ex + 853M2/Ex
Lot 26	opp. 309m²	perceel 840B/Ex
Lot 27	opp. 351m²	perceel 838K/Ex

Coördinatentabel				Coördinatentabel			
NR	X	Y	Materialisatie	NR	X	Y	Materialisatie
1	35440.172	181274.873	terreinpunt	51	35595.086	181208.177	muur
2	35442.348	181272.683	paal	52	35588.405	181224.915	muur
3	35454.911	181260.163	paal	53	35600.058	181213.133	muur
4	35463.467	181251.748	paal	54	35619.592	181255.854	muur
5	35472.061	181243.373	paal	55	35634.416	181245.212	paal
6	35480.689	181235.033	paal	56	35613.636	181266.091	paal
7	35491.505	181224.640	paal	57	35622.141	181274.556	paal
8	35500.723	181217.984	paal	58	35642.921	181253.677	paal
9	35515.538	181247.341	paal	59	35602.647	181283.021	paal
10	35505.973	181256.943	paal	60	35551.427	181282.142	paal
11	35503.850	181259.074	paal	61	35642.129	181294.449	paal
12	35497.504	181265.445	paal	62	35662.909	181273.569	paal
13	35495.380	181267.577	paal	63	35653.612	181305.876	paal
14	35489.035	181273.947	paal	64	35674.391	181284.997	paal
15	35496.309	181276.081	paal	65	35683.425	181315.343	terreinpunt
16	35478.438	181284.584	paal	66	35666.848	181311.425	terreinpunt
17	35472.271	181290.775	paal	67	35681.334	181291.914	terreinpunt
18	35499.580	181307.286	paal	68	35657.713	181322.656	terreinpunt
19	35510.997	181295.825	paal	69	35639.366	181345.065	terreinpunt
20	35519.466	181287.323	paal	70	35629.798	181337.989	paal
21	35527.935	181278.821	paal	71	35620.710	181331.269	paal
22	35539.227	181267.486	paal	72	35612.691	181325.409	paal
23	35548.923	181257.752	paal	73	35602.889	181318.247	paal
24	35556.404	181250.243	paal	74	35593.087	181311.084	paal
25	35563.885	181242.733	paal	75	35583.582	181293.178	paal
26	35571.366	181235.223	paal	76	35574.228	181277.575	beek
27	35576.941	181229.626	paal	77	35564.242	181273.196	paal
28	35576.935	181226.089	paal	78	35561.470	181257.910	paal
29	35580.345	181220.540	paal	79	35562.841	181255.946	paal
30	35553.000	181216.903	paal	80	35576.355	181272.723	paal
31	35545.514	181224.408	paal	81	35582.677	181279.016	paal
32	35540.731	181229.204	paal	82	35583.868	181280.201	paal
33	35538.002	181231.887	paal	83	35591.381	181287.678	paal
34	35530.364	181239.240	paal	84	35601.105	181297.357	paal
35	35520.452	181248.783	paal	85	35616.625	181281.783	paal
36	35518.625	181250.541	paal	86	35626.907	181272.092	paal
37	35530.799	181221.635	paal	87	35599.394	181284.615	paal
38	35520.868	181214.067	paal	88	35591.881	181257.137	paal
39	35520.234	181213.282	omheining	89	35584.368	181249.660	paal
40	35516.451	181210.399	omheining	90	35578.768	181244.087	paal
41	35508.641	181204.447	terreinpunt	91	35575.232	181244.094	paal
42	35514.164	181199.285	terreinpunt	92	35619.460	181284.585	paal
43	35525.268	181189.035	terreinpunt	93	35627.965	181293.050	paal
44	35534.728	181178.975	terreinpunt	94	35636.471	181301.515	paal
45	35551.641	181162.703	terreinpunt	95	35651.355	181316.329	paal
46	35542.820	181192.060	paal	96	35512.794	181315.276	terreinpunt
47	35551.583	181200.800	paal	97	35523.404	181304.625	terreinpunt
48	35552.281	181188.785	paal	98	35519.111	181300.433	terreinpunt
49	35563.934	181177.103	paal	99	35515.802	181320.601	terreinpunt
50	35583.433	181219.859	muur	100	35524.064	181209.610	omheining
102	35631.244	181244.172	paal	101	35520.811	181206.218	omheining



Operbare waterloop : Fonteinbeek
onafhankelijk - ingebouwd loop
nr 2.1.77

cabine EANDIS
perceel 838K

